

# Wire Joint

## Better Organized Wiring





Connect wires without stripping insulation, twisting conductor nor tapping around. Qualified to both strand and solid wires of single pole or multiple poles. With Wire Joint, connection become much easier which are time and cost effective. The only work you do are just inserting and pressing with a pliers !

## How to use

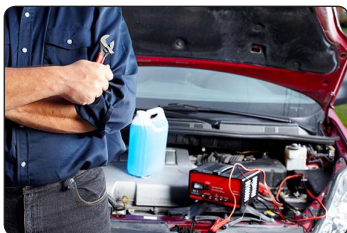


T Shape

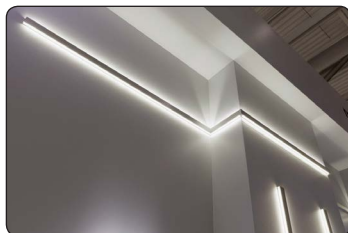


I Shape

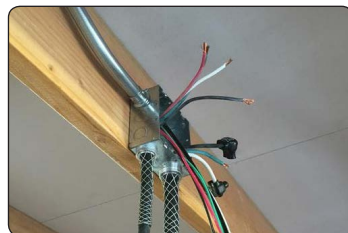
## Application Fields



Automotive



Lighting



Wiring



Security

## Model for Choice

Shape Type	<i>I shape</i>			
Item NO.	WJ-I-1R	WJ-I-1C	WJ-I-2R	WJ-I-2C
Pole Quantity	1	1	2	2
Pin Quantity	1	1	2	2
Color	Red+Black	Clear+Black	Red+Black	Clear+Black
Dimension	25*6.6*6.7mm	25*6.6*6.7mm	25*10.4*6.7mm	25*10.4*6.7mm
Voltage & Current	300V / 9A (Max Pin Can Bear)			
Application scene	Series Connection			
Workable Wire Gauge	22~20 AWG / 0.34~0.54 mm <sup>2</sup>			
Material	PC & Copper			

NOTE: Current here means the metal conductor inside connector can bear, the actual working current in an electrical system is related with wire connected. (gauge, conductor material,etc)



Shape Type	<i>T shape</i>			
Item NO.	WJ-T-1R	WJ-T-1C	WJ-T-2R	WJ-T-2C
Pole Quantity	1	1	2	2
Pin Quantity	1	1	2	2
Color	Red+Black	Clear+Black	Red+Black	Clear / Black
Dimension	25*12.8*6.7mm	25*12.8*6.7mm	28.6*16.6*6.7mm	28.6*16.6*6.7mm
Voltage & Current	300V / 9A (Max Pin Can Bear)			
Application scene	Parallel Connection			
Workable Wire Gauge	22~18 AWG / 0.34~0.78 mm <sup>2</sup>			
Material	PC & Copper			

NOTE: Current here means the metal conductor inside connector can bear, the actual working current in an electrical system is related with wire connected. (gauge, conductor material,etc)



Shape Type	<i>T shape(Big)</i>	
Item NO.	<i>WJ-T-1AR</i>	<i>WJ-T-1AC</i>
Color	<i>Red+Black</i>	<i>Clear+Black</i>
Dimension	<i>33.5*17*9mm</i>	<i>33.5*17*9mm</i>
Pole Quantity	<i>1</i>	
Pin Quantity	<i>1</i>	
Voltage & Current	<i>300V/15A(Max Pin Can Bear)</i>	
Workable Wire Gauge	<i>20~16AWG /0.54~1.32mm<sup>2</sup></i>	
Application Scene	<i>Parallel Connection</i>	
Material	<i>PC &amp; Copper</i>	



NOTE: Current here means the metal conductor inside connector can bear, the actual working current in an electrical system is related with wire connected. (gauge, conductor material,etc)

## Model for Choice

Shape Type	<i>Y shape for 1 line T connection</i>	
Item NO.	<i>WJ-T1-Y3R</i>	<i>WJ-T1-Y3C</i>
Color	<i>Red+Black</i>	<i>Clear+Black</i>
Dimension	<i>16.6*14.4*7mm</i>	<i>16.6*14.4*7mm</i>
Pole Quantity	<i>1</i>	
Pin Quantity	<i>1</i>	
Voltage & Current	<i>300V / 9A</i>	
Workable Wire Gauge	<i>22~20AWG /0.32~0.52mm<sup>2</sup></i>	
Application Scene	<i>Parallel Connection</i>	
Material	<i>PC &amp; Copper</i>	



NOTE: Current here means the metal conductor inside connector can bear, the actual working current in an electrical system is related with wire connected. (gauge, conductor material,etc)



# Wire Terminal

**Make Connection More Flexible**



A terminal that can be added to wire for connection without stripping, twisting nor tapping around. Which means wire gauge and length is not limited. Equipment manufacturer will no need to prepare stock of connector with different wire type to fit customer's various requirement. Further more, it can be unplugged in order to disconnect from power supply. All in all your project and business will be more flexible with it.



## How to use



## Models for choice

Item NO.	PWJ-I-2
Pole Quantity	2 poles
Workable Wire Gauge	22~20 AWG / 0.34~0.54 mm <sup>2</sup>
Voltage & Current	Max 36V / 9A
Dimension	26*15*7mm
Color	Transparent / Black (cap / base)
Material	PC & Copper

NOTE: Actual Current depend on wires connected to it

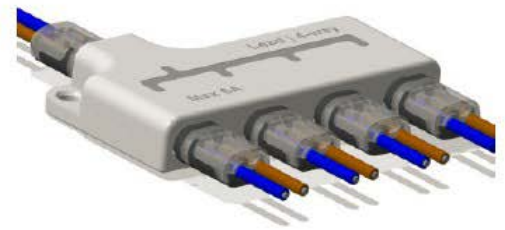
## Application Effect

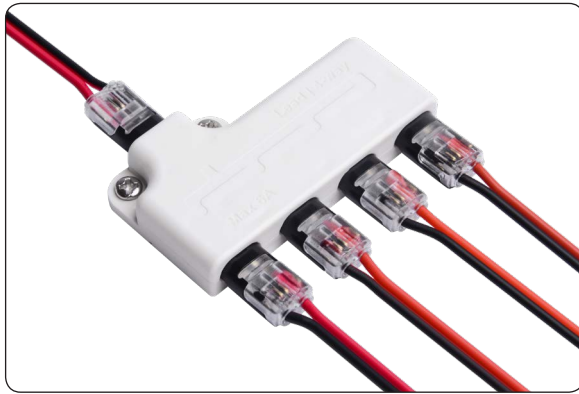




# Power Distributor

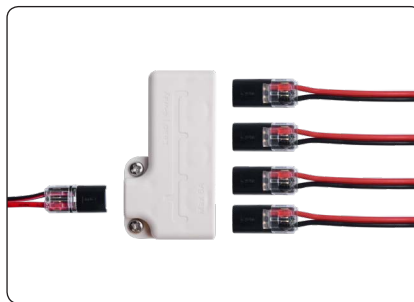
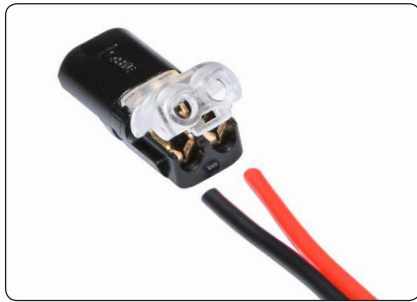
**Better Way of Connection Management**



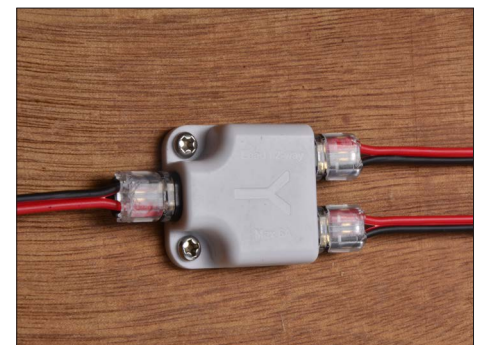
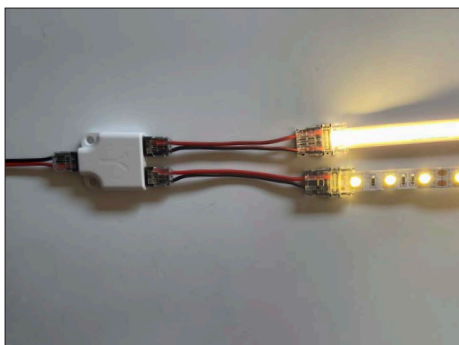


Perfectly and reliably to work with wire terminal connector in order to extend more branches. Provide user ability to connect or disconnect equipment at one position in order to increase efficiency of power management. Can be easily mounted and fixed to small space by screw.

## How to use



## Application Fields





## Models for Choice

Item NO.	PDB-12	PDB-13	PDB-14
Type	1 Lead - 2 Way	1 Lead - 3 Way	1 Lead - 4 Way
Dimension	30.7*28*9.6mm	30.7*42.5*9.6mm	30.7*57*9.6mm
Voltage & Current	Max 36V / 6A (Total Box)		
Color	White		
Material	PC & Copper		



PDB12



PDB13



PDB14